



**PBCT**  
PREMIUM BLDG.  
CO. FOR TRADING



# Company Profile

# Table of Content

---

01	About us	4
02	Our Philosophy and Vision	5
03	Businesses Overview	6
04	Product Business	8



## About Us

---

# “ Here to provide sustainable products & solutions

We are a matured start-up company. Our business leaders have over 30 years of experience in the field of heating, ventilation and air conditioning products and heavily supported by our sister company Alhashmiah general contracting Co. which has been for over 41 years. We assure you that we are committed to serve you with high quality and reliable HVAC products.

Guided by our corporate philosophy of “Trustworthiness and Transparency”, we will continue to challenge ourselves to provide a wide range of HVAC products and serving by harnessing our technical knowhow and our association with advanced technology driven manufacturers, the core of which encompasses sustainable energy efficient products.

We at PBCT are not limiting ourselves with the supply of energy efficient products, however we are gearing up to provide HVAC solutions to our customers, while keeping focus on **“Trustworthiness and Transparency”** in our business philosophy. Changing the mindset of each of our colleague and business partners is of the utmost importance. We are emphasizing three values in particular — **“Curiosity”** to explore out-of-the-box possibilities, **“Open Mind”** to flexibly accept opinions from other relevant fields, and **“Power to Inspire”** that is essential for guiding and motivating groups that work together. By encouraging colleagues to proactively engage with customers and discover new needs, PBCT will be much better equipped to propose appropriate business solutions. By repeating this cycle, we are determined to expand our business fields and become an ideal company from which industry will have higher expectations.

**We ask for your continued support and guidance on this exciting journey.**

### **PBCT** **Trustworthiness & Transparency**

Our corporate philosophy is “Trust worthiness and Transparency”. These are simple words, but they are not easily put in to practice. These important words represent unchanging principles to which we will always be dedicated.

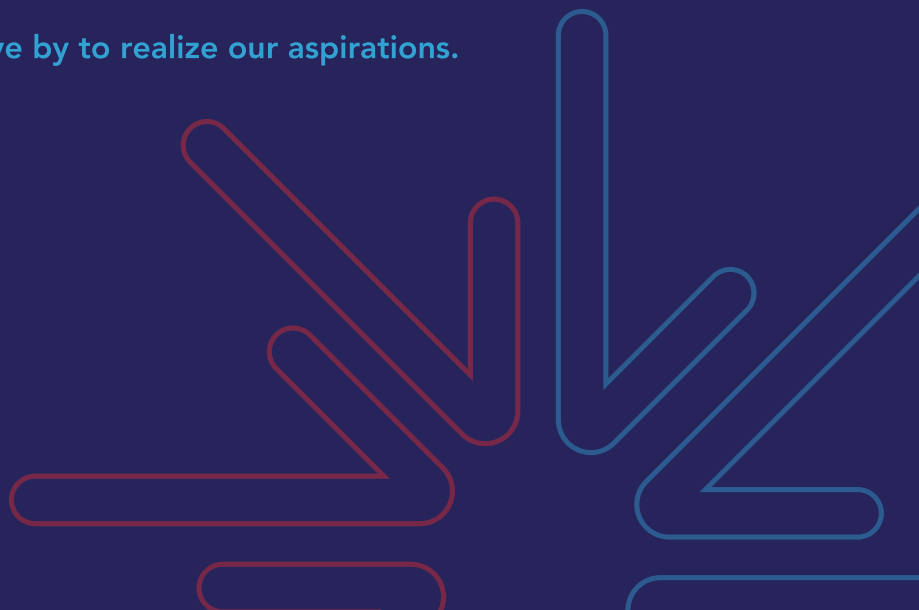
### **PBCT** **Sustainable HVAC Products & Services**

“Our Aspirations” mean not only to meet the needs of customers but also to provide sustainable HVAC products and services at affordable price and with effective delivery lead time. “To provide sustainable energy efficient air conditioning products and solu-tions” is our vision for the future.

### **PBCT** **Respect, Collaboration, Integrity Clear Communication**

Be broad-minded and well-informed to act quickly and resolutely. Harmonize diverse skills by thinking out of the box and communicating effectively with others. Work with diligence and sincerity as a responsible individual.

**These are the every day policies we live by to realize our aspirations.**

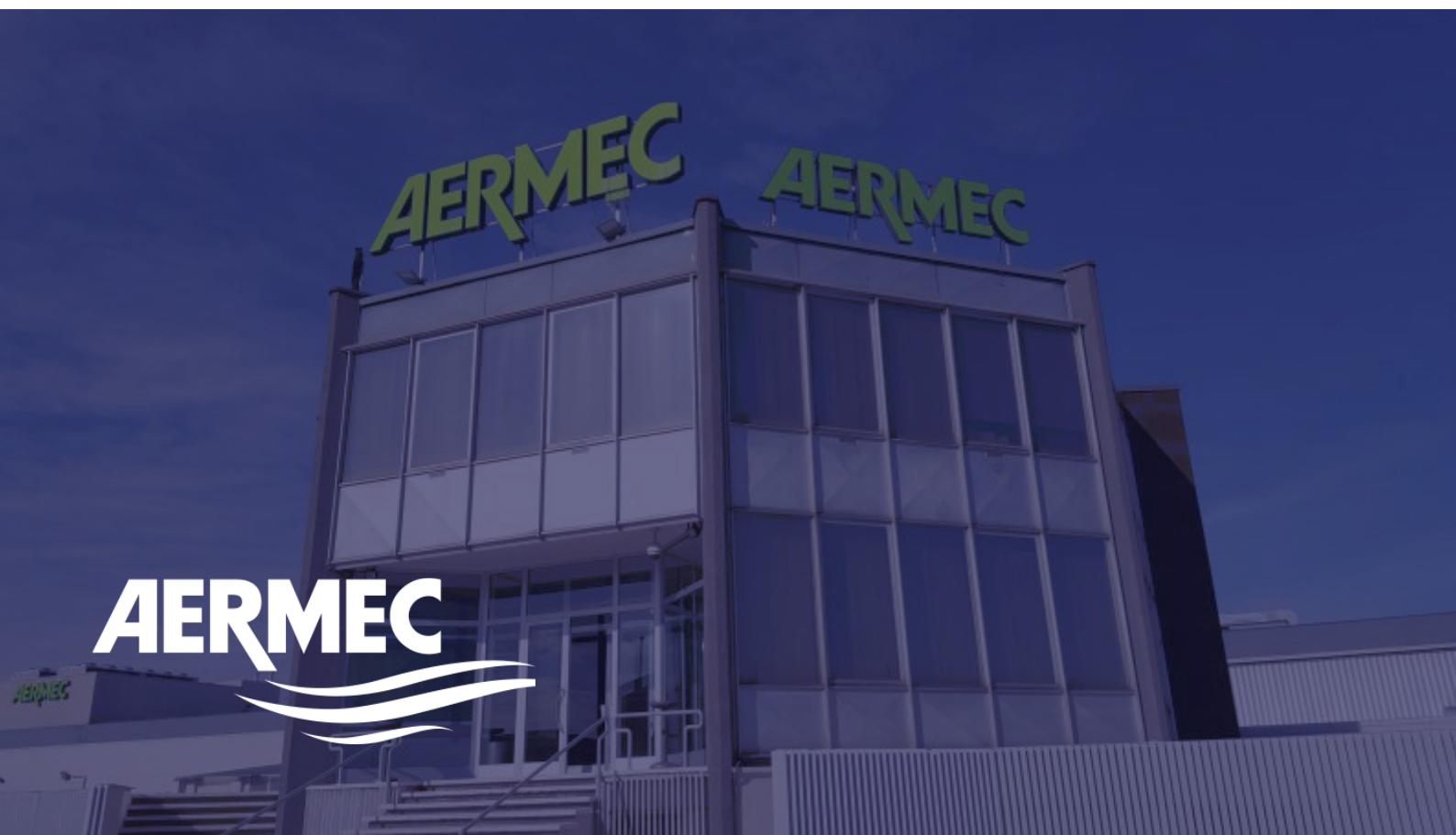


## Business Overview

---



AERMEC, established in 1961, is an integral part of Giordano Piello International Group, a diversified Italian group of companies with a turnover beyond €500m, 6 Centres of Excellence, over 1100 employees and 3 production facilities. Giordano Piello International Group distributes its products into the worldwide market via 6 distinct brands. Beyond the full air conditioning portfolio, Giordano Piello International Group offers know-how and product solutions spanning air treatment, heat exchangers, electrical motors, inverter drives, ventilation equipment and precision measurement devices. The group companies co-exist independently but contemporaneously collaborate strategically and more specifically formulate a unique advantage in the air conditioning market, creating a combined level of expertise which spans well beyond the typical application field offered by traditional air conditioning suppliers.





UNTES, Turkey's largest air conditioning equipment manufacturing company with over 52 years of product design, development and manufacturing excellence with key focus on offering sustainable and energy efficient products to its customer ensuring comfort, maximum energy efficiency, reliability, optimized investments and innovative and integrated air conditioning solutions. Driven by its mission to create permanent customer satisfaction and to match the customer's expectation with detailed understanding of technicalities, Untes became a customer centric decision leader enterprise in the sector, excelling in its service quality through its after-sales service network, establishing strong bonds with its partners, providing effective solutions in air conditioning area to the sector.



### Cooling Capacity

NSM: 302 - 2100 kW

NSMI: 285 -1201 kW

**NSM** is a dual-circuit or triple-circuit chiller charged with R134a gas. It has axial fans to ensure the quietest possible machine operation, twin-screw compressors, a shell and tube exchanger and "V block" micro-channel coils. The unit with several refrigerant circuits is designed to provide the maximum yield when fully loaded, but also guaranteeing excellent efficiency even with partial loaded and ensuring continuity if one circuit or more stops operating. There are 4 versions - standard, low noise, high efficiency and extra high efficiency.

**NSMI** is a single or dual circuit chiller with one or two twin-screw compressors, one of which has an inverter. The units are designed to provide high yield at full load, and very high efficiency at partial loads, with the increasingly optimised compression yield of the inverter compressor. It is available in the high efficiency and high efficiency silenced version

### Cooling Capacity

217 -1047 kW

**NRB** is a dual-circuit chiller charged with R410a gas. It has axial fans to ensure the quietest possible machine operation, scroll compressors with a high yield and low electricity absorption, a plate heat exchanger and "V block" micro-channel coils. The unit with two refrigerant circuits is designed to provide the maximum yield when fully loaded, but also guaranteeing high efficiency even with partial loaded and ensuring continuity if one of the two circuits stops operating. There are different versions available in order to meet market requirements - standard, silenced standard, high efficiency, silenced high efficiency, extra high efficiency and silenced extra high efficiency.

### Cooling Capacity

222 -1950 kW

**WTX** is an Indoor chiller for the production of chilled water suitable for large users in residential, commercial or industrial buildings. Single-circuit unit with centrifugal inverter two-stage oil-free magnetic levitation compressor also features a device for reducing the inrush current only to 6 Amperes!

The electronic expansion valve, combined with the continuous modulation of the inverter compressor, from 100% to 30%, allows to quickly and accurately satisfy any thermal load demand. The evaporator is flooded with a subcooler, the condenser can be 1 or 2 water side passages, to satisfy any installation requirement. Available in standard or silenced version with complete cowling to further reduce noise emissions. The technological choices made, always oriented to the highest quality and efficiency, allow EER values to be reached > 6 (class A for Eurovent working conditions) and Extraordinary efficiencies at partial loads (ESEER up to 9, highest in the market).



### Cooling Capacity

WFN: 652-2349/

WFI: 670-2406 kW

### Heating Capacity

WFN: 726-2610/

WFI: 741-2664 kW

**WFN** is an Indoor unit for producing chilled or heated water, with R134a refrigerant and twin screw compressors. Adapts to various load conditions thanks to precise temperature control. Produces chilled water up to 16 °C (processed water, evaporator side) and can also be used with a heat pump with a processed water temperature (on the condenser) of up to 55 C. Both heat exchangers (source side and system side) are of the shell & tube type. The electronic expansion valve is a standard on all the sizes and ensures excellent flow regulation and accurate temperature control, even with partial loads.

**WFI** the twin screw inverter compressors adapts to various load conditions thanks to precise temperature control. Produces chilled water up to 16 QC (processed water, evaporator side) and can also be used with a heat pump with a processed water temperature (on the condenser) of up to 60 'C

### Cooling Capacity

108 kW

**NRV** is air/water chiller for outdoor installation. It is made up of independent 108kW modules that can be connected to each other up to 9 modules to deliver a cooling capacity of 970kW. Every single module is an outdoor chiller to produce chilled water. Modularity allows you to adapt installation to the actual development needs of the system. Modularity is essential when component redundancy is required, as it allows for a safer system design and increased reliability. It is available in high efficiency and Silenced high efficiency version.

### Cooling Capacity

221 -1072 kW

**NRB\_C** is a dual-circuit condensing unit charged with R410a refrigerating gas. It's designed for outdoor installation. It has axial fans to ensure the quietest possible machine operation, scroll compressors with a high yield and low electricity absorption, and a condenser coil with "V block" micro-channels. As the machine has no evaporator or expansion valve, shut-off taps are used to keep all the refrigerant liquid inside the condenser for purposes of extraordinary maintenance. Particularly suitable for medium/large-sized applications, it's ideal for residential, commercial and industrial contexts (cooling only).

### Cooling Capacity

P series: 7-187 IG

series: 43-183 kW

R series: 20 - 36 kW

**P** series units are highly configurable for complete control of the temperature, humidity and quality of the air by means of accessories such as the humidifier, the electric post-heating unit and high efficiency filters.

**G** series units are designed with construction characteristics that optimise the space and layout of technical floors. The fan section is composed of a separately provided sub-base, providing remarkable advantages: a coil with ample heat exchange surface area, an extended filtering surface that limits maintenance operations thanks to less soiling, and horizontal air delivery for operation with less pressure drops.

**R** series units are made with the same dimensions as the rack units and have rear intake and front delivery, offering various advantages: the distribution of the treated air takes place near the servers, the horizontal intake and delivery does not change the direction of the flow to the inside of the machine, reducing pressure drops and consumption by the fans, and maintenance is easy thanks to front accessibility. The direct expansion versions are available for above series with matched remote air cooled condenser or with water cooled condensers. The chilled water version is available with water cooled circuit. Moreover, the direct expansion version is available with optional DC brushless inverter compressor for efficient modulation of delivered power. The Twin Sources solution is also available, with a second alternative cooling source. Advanced microprocessor electronic regulation for integrated control of the unit, with R5485 card as standard.

### Cooling Capacity

FCZ/FCZI series:

1.0 - 6.81kW

FCZ-H/FCZI-H series:

1.6 - 6.37kW

**FCZ** series fan coil units are available in various set-ups depending on the installation position, with the possibility of being ducted as well. FCZI series has all the features similar to **FCZ** series however comes additionally with brushless inverter motors which enables more efficient and quieter performance.

**FCZ-H/FCZI-H** series fan coil unit has built-in photocatalytic bacterial lamp suitable for space requiring the highest degree of hygiene.

**VES** series fan coils are ductable units equipped with a fan unit that continuously modulates air flow, for greater comfort and significant energy savings, thanks to the brushless motor with inverter, with wide useful head range.

**VED** series fan coils are available in various versions, they can be installed either vertically or horizontally and come with multi-speed on/off motors or inverter motors. The VED units come with a class G3 air filter as standard and is available for both standard and district cooling applications. Above units features ABS fans which enables net reduction in the noise emission level and in motor's electrical consumption compared to traditional fans with a metal structure. They are also compatible with the VMF management system - Aermec hydronic management system.



**PBCT**  
PREMIUM BLDG.  
CO. FOR TRADING

**ÜNTES**  
1968'den bugüne güvenle

Product Business

### Cooling Capacity

TCAVTZ / TCAVQZ:

317 - 1325 kW

TCAITZ / TCAIQZ:

518 - 1308 kW

**Full Power HE-A TCAVZ series** is a packaged air-cooled water chiller with semi-hermetic screw compressor, dry expansion shell and tube evaporator, microchannel air cooled condenser, low noise axial fans and electronic expansion valves. The compressor comes with star-delta starter and is complete with integral protection, casing heater and refrigerant gas outlet piping shut-off valve.

**Full POWER VFD (1+i) TCAIZ series** chiller is designed to ensure that one of the circuits has stepless semi-hermetic screw compressor driven by variable Vi regulated by inverter and the other circuit/s driven by fixed speed motor with linear capacity control to deliver high efficiency levels operating under wide capacity range. Both series are offered in two versions: **T** - High efficiency version with oversized condensing section (TCAVTZ / TCAITZ) and **Q** - Super-silenced version complete with compressor technical compartment soundproofing, super-reduced speed fans and oversized condensing section (TCAITZ / TCAIQZ).

### Cooling Capacity

203 - 1627 kW

**Z-Flow HE TCHVZ series** is a packaged water cooled chiller designed for EER upto 5.07 (Class A) and ESEER Up to 6.03. The chiller has semi-hermetic screw compressor with star-delta or part winding starter and complete with integral protection, casing heater and refrigerant gas outlet piping shut-off valve. The chiller comes with Electronic expansion valve, dry expansion shell and tube evaporator with counterflow arrangement complete with closed cell polyurethane foam rubber insulation, water flow differential pressure switch, Victaulic fittings, shell and tube condenser complete with safety valve, and service valve on the high-pressure refrigerant gas circuit and microprocessor electronic control. The series is offered in two versions : **B** - Standard version (TCHVBZ) and **I** - Soundproofed version with soundproofing compressor lining (TCHVIZ)

### Dehumidifier Capacity

20 - 200 Kg/hr

**UHNS** is a swim pool dehumidifying unit available in 12 Different Cross-sections up to 31,500 m<sup>3</sup>/h airflow designed with eco Friendly R410A Refrigerant with scroll hermetic compressor and can handle dehumidification capacity up to 200 kg/h. Unit with Integrated Electronic Regulation comes with optional Energy recovery feature utilizing Plate heat exchanger or Horse shoe heat pipe and provides unmatched comfort and air quality operating over wide range.

**Structure & Panels:** Self Supporting Frame and Double Sheet Sandwich Panel.

**Profile:** Aluminum Alloy (AlMgSi0.5)

**Thermal and Acoustic Insulation:** Polyurethane / Rockwool



### Dehumidifier Capacity

20 -200 Kg/hr

**Sheet Material:** Dyed Galvanized Steel.

**Power & Regulation:** On Board Power and Electric Regulation Board.

**Monitoring / Management:** BMS Management Compatibility.

**Fan:** Standard VFD Fans / Plug Fan

**Heating Coil:** Cu /Al Epoxy Coated Hot Water Panels Coil with 3-way Valve / Electric Heating

**Evaporator:** Copper Aluminum Hydrophilic Coated.

**Condenser:** Copper Aluminum Epoxy Coated.

**Heat Recovery:** Plate / Heat Pipe

**Control** Electronic Expansion Valve

**Energy Saving** Free cooling option with VFD control.

### Cooling Capacity

18 - 276 kW

**URTT** series packaged air conditioners are completely factory assembled, internally wired, charged with ecological R-410a refrigerant. The functional tests and tightness tests are conducted before delivery. The units are plug and play type and ready for installation. They are designed for ducted systems which enables it to be installed on roof tops or on the ground. URTT series is designed to operate at up to 53°C tropical ambient conditions. Condenser coils are manufactured from inner grooved copper tubes with corrugated aluminum fins and Evaporator coils are manufactured of seamless copper tubes and aluminum fins to ensure optimum heat transfer. All coils are tested against leakage by air pressure under water. Ample condenser surface and sensible air flow across the condenser ensures a low temperature differential between condensing temperature and the high ambient making the URTT packaged unit perform efficiently and durably.

### Air Flow Range

1,000 - 100,000m<sup>3</sup>/hr

#### **UKS Modular & Hygienic Air Handling Units**

Flexible, Modular and Energy Efficient Air Handling Units in 23 different Cross-sections and up to 100,000 m<sup>3</sup>/h airflow. EUROVENT certified according to EN 1886 Full compliance with Eco-Design 2018. Improved and Enhanced Indoor Air Quality Standards. Integrated Electronic Regulation.

**Profile** - Thermo-break Galvanized Steel /Aluminum

**Inner/Outer Sheet** - Painted Galvanized / Stainless /PVC Coated Galvanized

**Panel Thickness** - 60mm /50mm

**Insulation** - Mineral Wool / Rockwool / Glass Wool

**Config.** - Inline/Double Deck / Side by Side

**Fan-** Belt driven Backward / Forward / Airfoil Plug EC Motor Fan

**Humidification-** Sterile Steam / Water / Atomizing



**PBCT**  
PREMIUM BLDG.  
CO. FOR TRADING

**ÜNTES**  
1968'den bugüne güvenle

Product Business

### Air Flow Range

1,000 - 100,000m<sup>3</sup>/hr

**Heat Recovery-** Plate / Heat Wheel / Heat Pipe / Run Around

**Heating / Cooling-** Chilled Water / Hot Water / DX / Electrical

**Coil- Copper Pipes -** Aluminum Fins / Copper Pipes - Copper Fins

**Options:** Roof canopy, UV lamps, Inspection Glass, Manometers, Fan and Pressure, Sensors, Drain - siphons, VFD, Lighting, Door Switch

### Air Flow Range

1,000 - 90,000m<sup>3</sup>/hr

**UKS Pange Ecology Units** Consist of electrostatic filter and activated carbon filter groups within the structure of EN 1886 — TUV approved and EUROVENT certified air handling units with 23 different cross-sections and air flow rate up to 90,000 m<sup>3</sup>/h, According to filtration requirements, electrostatic filters and activated carbon filters are flexibly selected and designed by the selection software Viithin Eurovent certified performance values. All kinds of applications such as heat recovery or the use of the electrostatic filter on the fresh aft side can be easily designed. For industrial applications like pre-cooling, evaporative cooling, stainless steel inner skin etc. are available.

### Air Flow Range

400 - 5,500m<sup>3</sup>/hr

**UTFP Thermo Fresh series** is a heat recovery unit encasing aluminum plate cross-flow heat recovery system. The unit comes with 6 staged airflow rate control powered by highly efficient coupled plug fans or centrifugal fans with low sound level. The series is available in 9 different sizes up to 5500 m<sup>3</sup>/h airflow rate and delivers high indoor air quality resulting from ISO eDM10 50% (M5) up to ISO ePM1 80% (F9) filters. The control unit is user friendly and has remote access through mobile app using Wi-Fi technology

**UTFP Thermo Fresh Pius series** complying with Latest Eco design Regulation Requirements which has up to 90% Thermal Efficiency. The unit comes with Proportional Flow Control Powered by Highly Efficient EC Plug Fans with Low Sound Level. UTFP unit is designed for Minimum Thermal Leak using Double Skinned Casing Structure and air-tight service doors by Virtue of Balloon Gasket.



### Air Flow Range 185 - 2,145m<sup>3</sup>/hr

**UNFC series** fan coil units are your most ideal for school, hospital, mass housing, cinema, shopping center, warehouses, offices and big workplaces thanks to their ergonomic designs and conforming to the desired technical and dimensional sizes. They also suit up all spaces thanks to their decorative special design. There are 12 different size for each model of UNFC units ranging from 185 m<sup>3</sup>11-1 to 2,145 m<sup>3</sup>/h, The radial forward curved double suction fans are balanced statically and dynamically. The maximum noise insulation is obtained thanks to the special insulation materials which are placed onto the internal casing. UN FC series is available in 7 types and each type is available in 2 pipe or 4 pipe or PSC motor or EC motor version.

#### **Types:**

**GTT:** Ceiling Concealed Type, rear inlet and front supply

**GTA:** Ceiling Concealed Type, bottom inlet and front supply

**KTP:** Cabinet ceiling type, bottom inlet and front supply

**KTT:** Cabinet ceiling type, rear inlet and front supply

**KDT:** Cabinet floor type, bottom inlet and top supply (Feet are optional)

**KYT :** Cabinet floor type, front inlet and top supply

**GDT:** Floor type without cabinet, bottom inlet and top supply



Saudi Arabia, Riyadh Prince Abdul Aziz Bin  
Musaid Bin Jalawi Al Sulaimaniyah District

**Contact Us**  
E [info@pbct.com.sa](mailto:info@pbct.com.sa)